

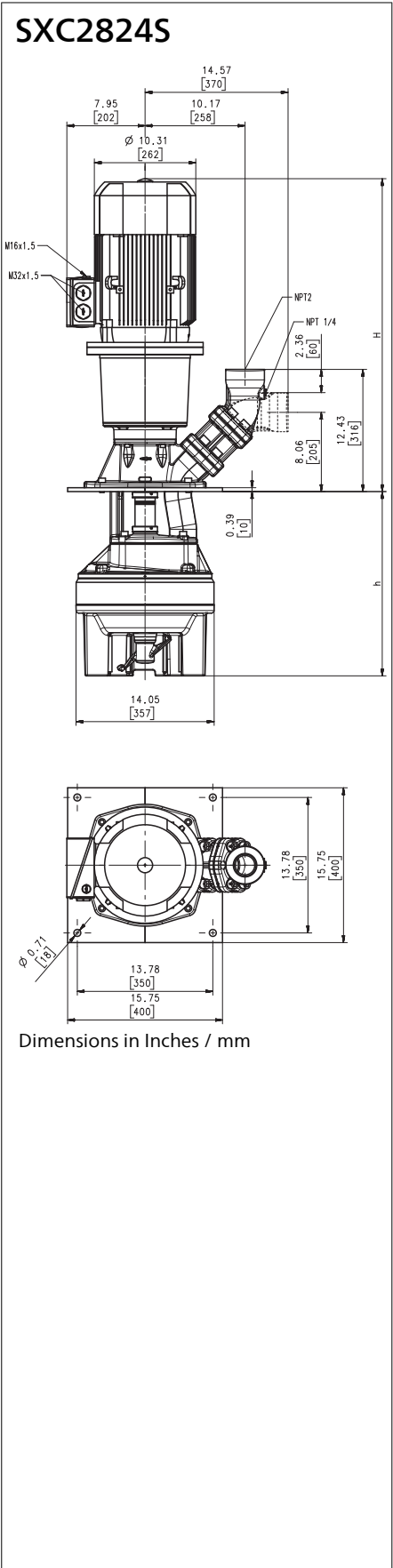
Cutter Pumps

SXC2824S

Axial/semi-open impellers



60 Hz



Type	Flow at head	Height	Depth of im- mersion		Weight		Power (4-pole)	Voltage 3 ~	Fre- quen- cy	Current	Speed
	GPM /Feet l/min /m	H inch mm	h inch	h mm	Lbs	kg	HP kW	V	Hz	AMPS	RPM
SXC2824S480	200/45 750/14	31.9 809	18.74	476	428	194	10 7.5	460	60	12.4	1770
610			23.86	606	432	196					
730			28.58	726	439	199					



Cutter Pumps

The cutter pumps of the **series SXC** are designed to handle low alloyed steels, machining steel and cast iron / aluminum combinations. Chips can also be in the shape of birds nests or chip bundles, and must be supplied to the suction inlet of the pump. The chips are picked up by the agitator, broken up if necessary, cut, and then delivered by the pump. The SXC pumps are equipped with the user-friendly 45 degree **flange** connection which allows for either vertical or horizontal pipe connection and the connection of a pressure gauge. For more information see lifting pumps features SXC/SPC within the technical information section.

Applications

- Types of fluid
- coolants
 - cooling/cutting oils on request
- Max. chip to coolant ratio by weight:
- 0.5 %
- Chip material:
- Low alloyed steel, machining steel, cast iron/aluminum combinations
- Kinematic viscosity
- ...200 SSU (...45 mm²/s)
- Pumping temperature
- 30...175 °F (0...80 °C)

Construction

Pump body	cast iron
Cover	cast iron
Impeller radial	cast steel
Cutting unit	coated (> 60 HRC)
Shaft	steel

